



33-35 Manor Road, Colchester, Essex CO3 3LX.

2007

2007/0701

BETTER SAFE THAN SORRY!

Many of the areas around us have experienced problems with the recent weather conditions. Pegasus, themselves, had to abandon their site at Kettering when a flash flood meant that their premises were under many feet of water, and essential equipment and data were damaged. A number of our customers have also experienced problems following severe thunderstorms from power surges when lines were struck, or simply the ever present threat of fire, must be taken into account when thinking of one of the most precious commodities of a company ~ its data.

We are not trying to be scaremongers but it is essential that senior management consider the ramifications of such dangers, their company's exposure to these threats, and business continuity implications.

Many of you will be aware that we have been undertaking in-house tests on a product to protect your data against damage from flood, fire, bomb damage and theft. I am pleased to tell you that these tests have now been successfully concluded and we are now able to offer you an advanced solution to this problem.

If you would like more detail, or assistance in determining the threat to your company in particular, please contact your Sales Manager on 01206 711 451.

OPERA AND OPERA II USERS ~ NOMINAL MODULE DATES

It is worth checking your Nominal Calendar from time to time. All transfers to Nominal Ledger are processed according to dates, and will not be properly processed should the date of the record fall beyond the current period dates held within the Nominal calendar.

We have come across instances where the year-end date, or month date are "out" by one day or so. This may not always be obvious to users, but could mean that not all data is transferred to the correct period or year.

WINDOWS VISTA OPERATING SYSTEM

New PCs are now being delivered with the Windows Vista Operating system. The existing accounting and software systems issued by Intex, IRIS, Pegasus, and others are not yet compliant with Vista.

If workstations are ordered through us, our engineers will provide these with the Windows XP Operating System until such time that Vista compliant accounting packages are issued later this year.

For more details regarding Vista or ordering workstations please contact the Sales Department on 01206 711 451.

PEGASUS CONSTRUCTION INDUSTRY SOLUTIONS ~ V2.03.04

The above version has been released and we have commenced distribution to our CIS users.

Computerwise Limited is now part of a much larger group with offices in Bromley, Colchester, Portsmouth, and Wimbledon.

This structure provides you with the stability and expertise that a large company can offer whilst coupling it with the care and responsiveness exercised by a smaller concern.

Support Department

☎ 01206 711 452

☎ 01206 764 749

✉ support@cwise.co.uk

🌐 www.cwise.co.uk

Copyright © Computerwise Ltd, 2007

Computerwise Limited

Registered in England

N° 1523513

Registered office

33-35 Manor Road, Colchester, CO3 3LX.

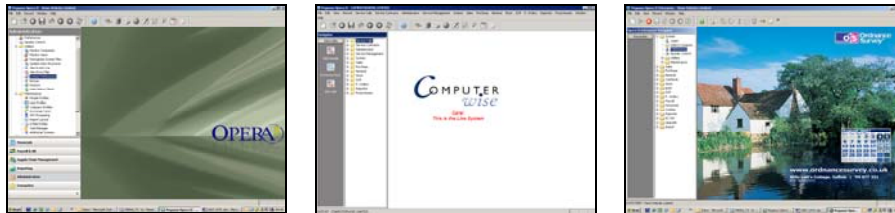
Continued on next page...

OPERA II ~ OPERATIONAL TIP

Do you run Opera II for more than one company on your system? In most cases the answer is "Yes" (for apart from the live data you will be running the test company, Orion Vehicles Limited).

This could give rise to confusion, as it is not always immediately clear which set of data you are accessing. This need not be a problem though, as Opera II allows you to set the screen background according to the company and your individual preferences.

This is achieved by opening the System folder and selecting Preferences, then from the Preferences screen click the Action button and User Background Options. The displayed boxes allow you to choose the standard Opera background (in green, blue or grey if you have v5.00.00 onwards) or your own graphic image and allocate these to particular companies. Give it a try!



Example screen displays

OPERA II ~ BENEFITS OF V5.00.00 AND ABOVE

Version 5 of Opera II has been released for some time now. Whilst much of the improved functionality has also been included within matching version 4 releases, there are significant benefits to be obtained only by upgrading to v5.13.00 (the current release).

Listed below are functions that only occur within that release:

- Reverse charge accounting for VAT
- Improvements to Real Time Update of Nominal Ledger
- Ability to process P45/P46s on-line
- Facility to import pay sheets (Excel format)
- Various changes to the Financial Modules.
- Payroll View (allowing view of detailed Payroll History)

If you are not yet using Opera II version 5, and would like to convert to this, please contact Support Department who will arrange the necessary upgrade.

OPERA II ~ V5.14.00 RELEASE

Pegasus has announced the release of Opera II v5.14.00. This is currently being tested and is scheduled for release during August (mid to end).

Although we are keen to migrate users to this version, it is our policy to evaluate software reliability before disseminating it. Accordingly, we would not expect to distribute this release until mid-September at the earliest.

STOP IT!

We hope that you find our e-mailed information sheets of direct help to you and your business. However, if you wish to remove your name from the mailing list or make changes regarding recipients, please contact John Stannard, in the Support Department.

2007

2007/0701

Support Department

☎ 01206 711 452

☎ 01206 764 749

✉ support@cwise.co.uk

🌐 www.cwise.co.uk

Copyright © Computerwise Ltd, 2007

Computerwise Limited

Registered in England

Nº 1523513

Registered office

33-35 Manor Road, Colchester, CO3 3LX.